

BORA



PORTLAND PUBLIC SCHOOLS

Ida B. Wells High School

Public Design Workshop

October 29, 2023

ab after **BRUCE**
public relations & marketing

WALKER | MACY

kpff

AGENDA

Introduction 00:15

Vision & Goals 00:45

- What is a modernization?

- What we've heard so far

- Exercise

Site Opportunities & Context 00:45

- Site Analysis Review

- Exercise

Next Steps 00:05

- Schedule

Questions & Comments 00:10

FULL PROJECT TEAM

PPS Project Team: Office of School Modernization

Marina Cresswell – Sr. Director
Darren Lee – Director of Construction

Erik Gerding – Sr. Project Manager
Hector Lopez – Project Manager

Derek Henderson - OSM Operations Specialist
David Mayne – Bond Communications Manager
Johnathan Wan – Operations + Communications



Architecture & Engineering Team:

Bora Architects - Architecture, Interiors
After Bruce - Community Engagement
KPFF - Structural Engineer, Civil Engineer
NBZ - Structural Engineering
Rivero Design - Civil Engineer
Walker Macy- Landscape Architect
PAE - MEP Design w/ Burman Design
Vertex - Low Voltage/IT
Studio Pacifica - Accessibility
Shalleck Collaborative - Theater Design
DCW - Cost Consultant
Bookin Group - Land Use Planning
Code Bird - Code Analysis and review

DESIGN TEAM HERE TODAY



Erik
Gerding



Hector Lopez
PPS



Stefée Knudsen
Bora



Amelie Reynaud
Bora



Amy Running
Bora



Rhonda Teeny
After Bruce

PPS CAPITAL BOND IMPROVEMENT PROGRAM

Office of School Modernization :

We build education facility projects funded by Multnomah County Property Tax Bond Measures that are approved for capital improvements only. Some additional funding may come from grants and energy efficiency incentives. We do not use PPS general fund dollars for modernization construction projects. Our work is separate from PPS Facilities Maintenance.

Guiding Documents: Long Range Facility Plan, Education Specifications, PPS Design Standards & Guidelines. PPS Vision Documents

2017 Bond Measure– Conceptual Master Planning

2020 Bond Measure

**Funding for Planning & Design for Cleveland and Ida B. Wells Modernizations.
No construction funding**

IBWHS Modernization – Planning & Design



Vision + Goals



WHAT IS A MODERNIZATION?

There are three common types of building projects that could fall into the modernization category

- Building remodeling
- Remodeled + addition to the building
- New construction



WHAT IS A MODERNIZATION?

Recent school modernization projects have included renovation + addition or new construction:

- Lincoln High School (new construction)
- Franklin High School (remodeled + addition)
- Kellogg Middle School (new construction)
- McDaniel High School (remodeled + addition)



WHAT IS A MODERNIZATION?

All modernization projects include:

- Updated heating/cooling systems

- Seismic upgrades + code required seismic design

- Technology upgrades

- Improved safety considerations

- New furniture and equipment throughout

- Mechanical, electrical and plumbing systems upgrades

- Lighting Improvements for energy efficiency and longevity

- Upgrade athletic facilities

WHAT IS A MODERNIZATION? - ED SPEC (EDUCATION SPECIFICATION)

It's a list of ingredients.....



WHAT IS A MODERNIZATION? - ED SPEC (EDUCATION SPECIFICATION)

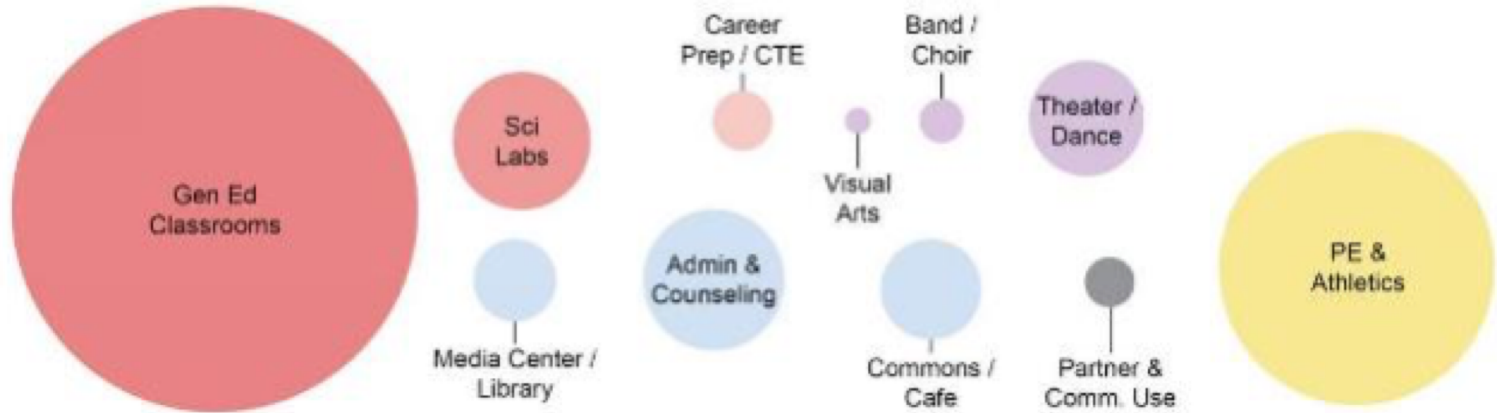
It's a list of ingredients.....



.....and the outcome will be unique to IBW!

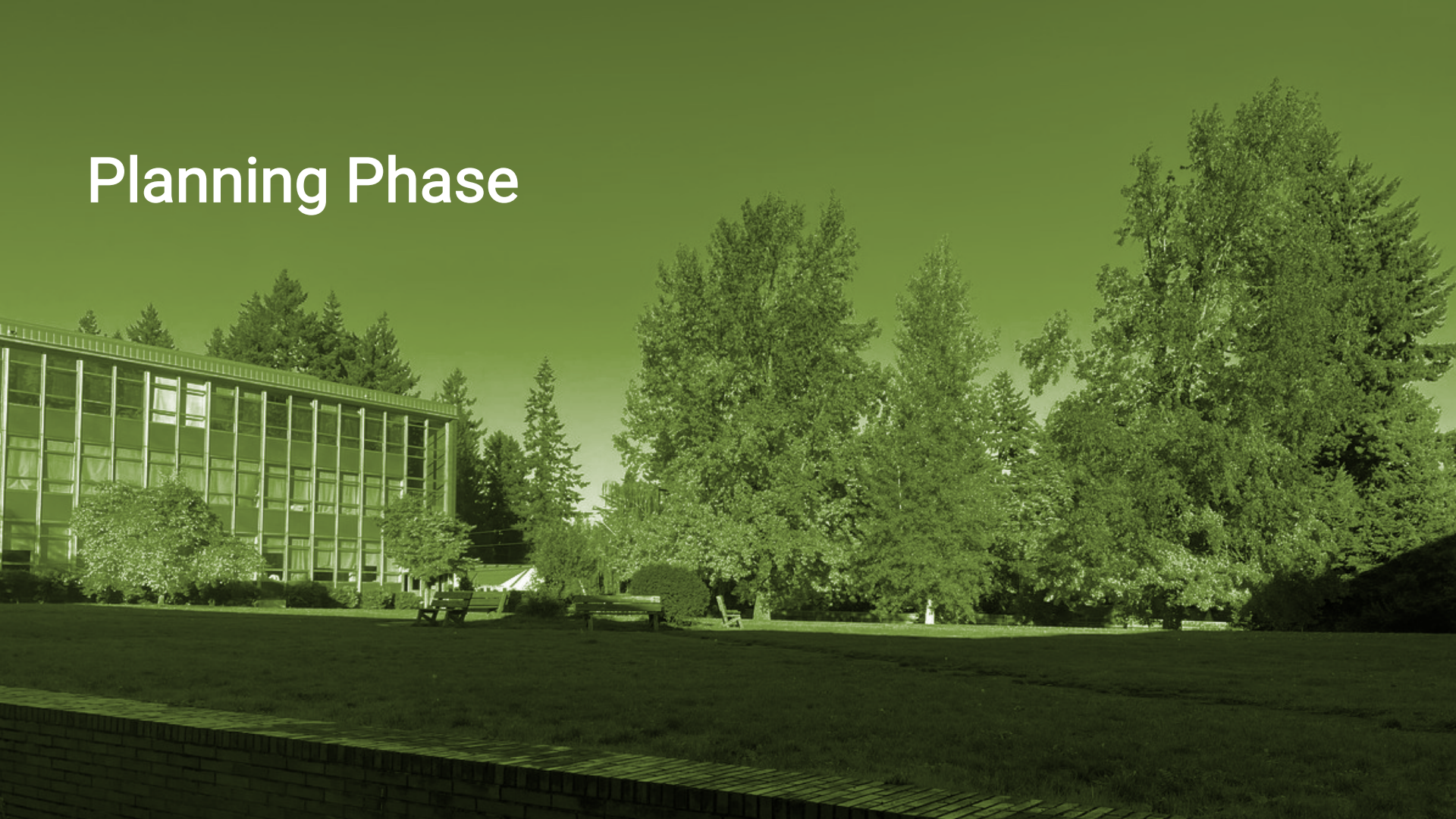


WHAT IS A MODERNIZATION? - ED SPEC (EDUCATION SPECIFICATION)



Find a link on the IBW Website! [HS Ed Spec](#) (or

Planning Phase



PLANNING PROCESS

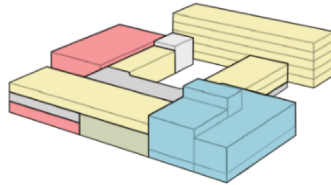
1. Understand **constraints and opportunities**
2. Understand the **values and goals** that make this project special
3. Determine how the building should **fit on the site** and where
4. Create a **massing concept** design that fits all the pieces
5. Establish a **reasonable budget** for the project moving forward

PLANNING PROCESS - what does “massing concept design” mean?

Lincoln High School **massing concept options**

RENOVATION + ADDITION

Wrapper



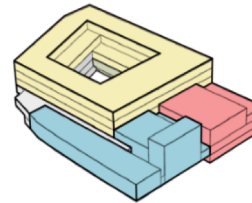
East Parcel

5 Stories

Inefficient use of land,
Swing Site costs

FULL REPLACEMENT

Horizontal

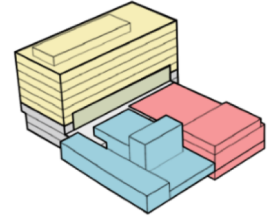


West Parcel

5 Stories

Structural and
acoustical issues

Vertical



West Parcel

9 Stories

Deep foundations

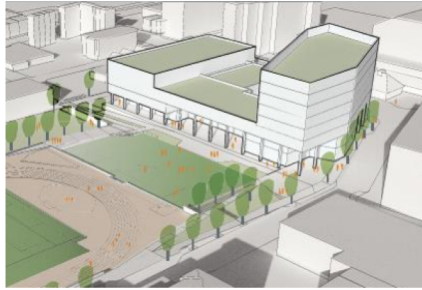
Site - Building Location

Height

Potential Challenges

PLANNING PROCESS - How this relates to the design process to follow

Lincoln High School progression of design



Conceptual
Design



Schematic
Design



Design
Development



Construction
Documents

**Planning
Phase**

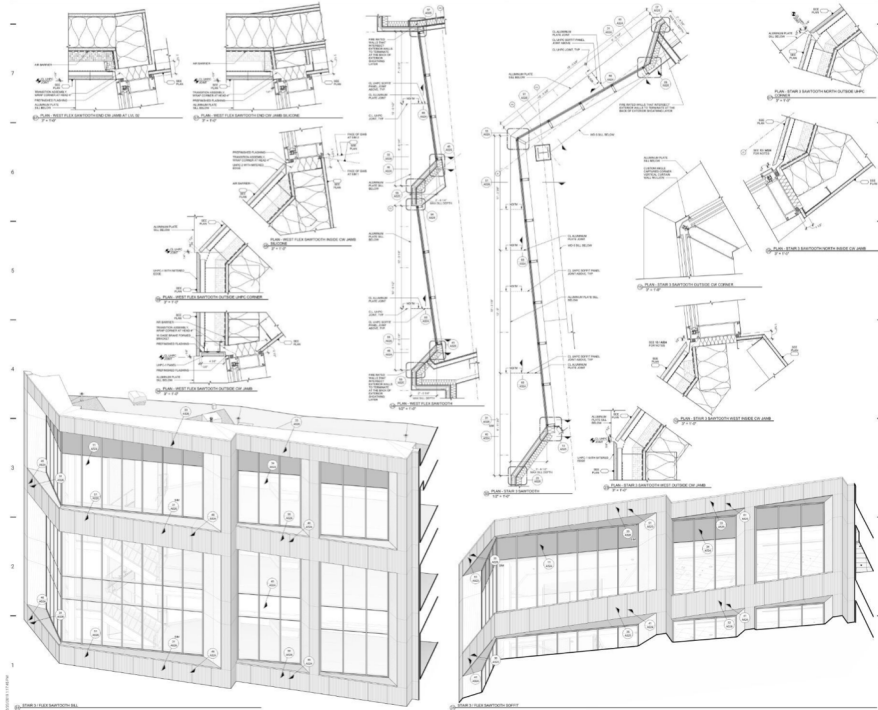


**Design
Phase**



PLANNING PROCESS

Lincoln High School construction documents



VIEW FROM SALMON OF ENTRY



VIEW FROM MAC CLUB LOOKING EAST



VIEW FROM SW 18TH LOOKING SOUTH



VIEW FROM FIELD LOOKING WEST



VIEW FROM SW 17TH LOOKING NORTH



VIEW FROM MAIN STREET

Early Feedback



WHAT WE HEARD SO FAR: THEMES

The new Ida B Wells High School will be successful if the result...

common themes / categories

- human experience
- community health, safety, and belonging
- site design
- building design
- sustainability and health
- financial and enrollment
- process

WHAT WE'VE HEARD SO FAR: HUMAN EXPERIENCE

The new Ida B Wells High School will be successful if the result:

evokes **pride** and **respect**

inspires learning

anchors the community

WHAT WE HEARD SO FAR: COMMUNITY HEALTH, SAFETY AND BELONGING

The new Ida B Wells High School will be successful if the result:

creates a sense of **belonging**

is **integrated** with the neighborhood

recognizes **indigenous culture** and people

WHAT WE HEARD SO FAR: SITE DESIGN

The new Ida B Wells High School will be successful if the result:

welcomes and supports diversity

provides (neighborhood) **gathering** space

supports **robust athletic** programs

WHAT WE HEARD SO FAR: BUILDING DESIGN

The new Ida B Wells High School will be successful if the result:

is **beautiful and timeless**

is **safe and functional**

has a **variety of spaces & flexibility**

considers future **technology**

WHAT WE HEARD SO FAR: SUSTAINABILITY + HEALTH

The new Ida B Wells High School will be successful if the result:

lasts for the next 100 years (plus?)

supports **health** and **safety**

is highly **sustainable**

WHAT WE HEARD SO FAR: FINANCIAL + ENROLLMENT

The new Ida B Wells High School will be successful if the result:

is on **budget** and on **time**

increases **enrollment** and **graduation** rates

increases **staff retention**

WHAT WE HEARD SO FAR: PROCESS

The new Ida B Wells High School will be successful if the result:

learns lessons from previous projects

includes and **reflects community** input

WHAT WE HEARD SO FAR: WHAT IS MISSING?

The new Ida B Wells High School will be successful if the result:

?????

OUTREACH ACTIVITIES

E-newsletter content

Online polls to identify preferences

Information posters

Neighborhood flyers

Listening sessions

Surveys available in several languages

Student assembly

1:1 Stakeholder interviews



what
else?

POSSIBLE PARTNER ORGANIZATIONS

PSU Native American
Student Community Center

Habitat for Humanity

Positive Charge PDX

Jewish Community Center

Local Mosque

Cluster elementary & middle
schools (PTA)

Youth organizations

Multnomah Arts Center

Southwest Portland
Little League

Foothills Soccer Club

Multnomah Co. Library

Stephens Creek Crossing

Neighborhood House

Hillsdale Business
Association

Southwest Trails

Portland Parks & Rec



who else?

The Negro Fellowship League will hold a meeting of delegates September 17, 1916, at 4:00 p.m. in the Reading Room, 3005 St. Paul St. The meeting is for the purpose of electing delegates to attend the National Negro Rights Congress to be held in Washington City the first week in October. Mr. Wm. Monroe Trotter, of Chicago, who is secretary of the same organization, has especially urged that Chicago send a delegation. He has urged in this vital matter that Chicago attend.

The meeting last
interest. It was C
Recommendations

The Alpha Suffrage Re

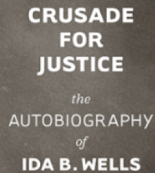
Chicago, Ill. March 18 1914

THE ALPHA SUFFRAGE CLUB.

[illegible]

Mr. Speaker, I am opposed to the intermarriage of the races. The Negroes

Official
Program
WOMAN
SUFFRAGE
B...



SECOND EDITION

What do you understand about Ida B Wells as a person? What comes to mind?

What are important attributes or values that should be reflected in the new school?

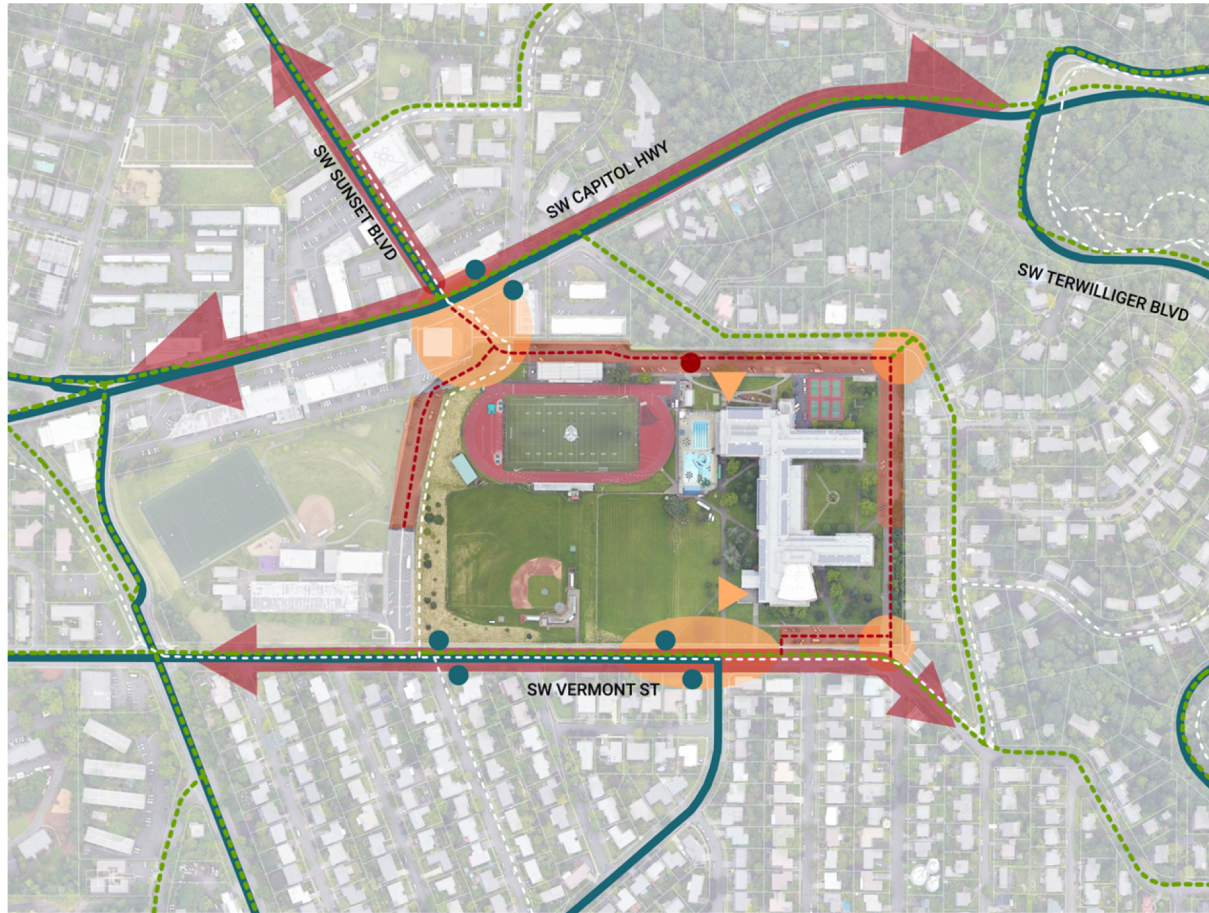


Site Opportunities





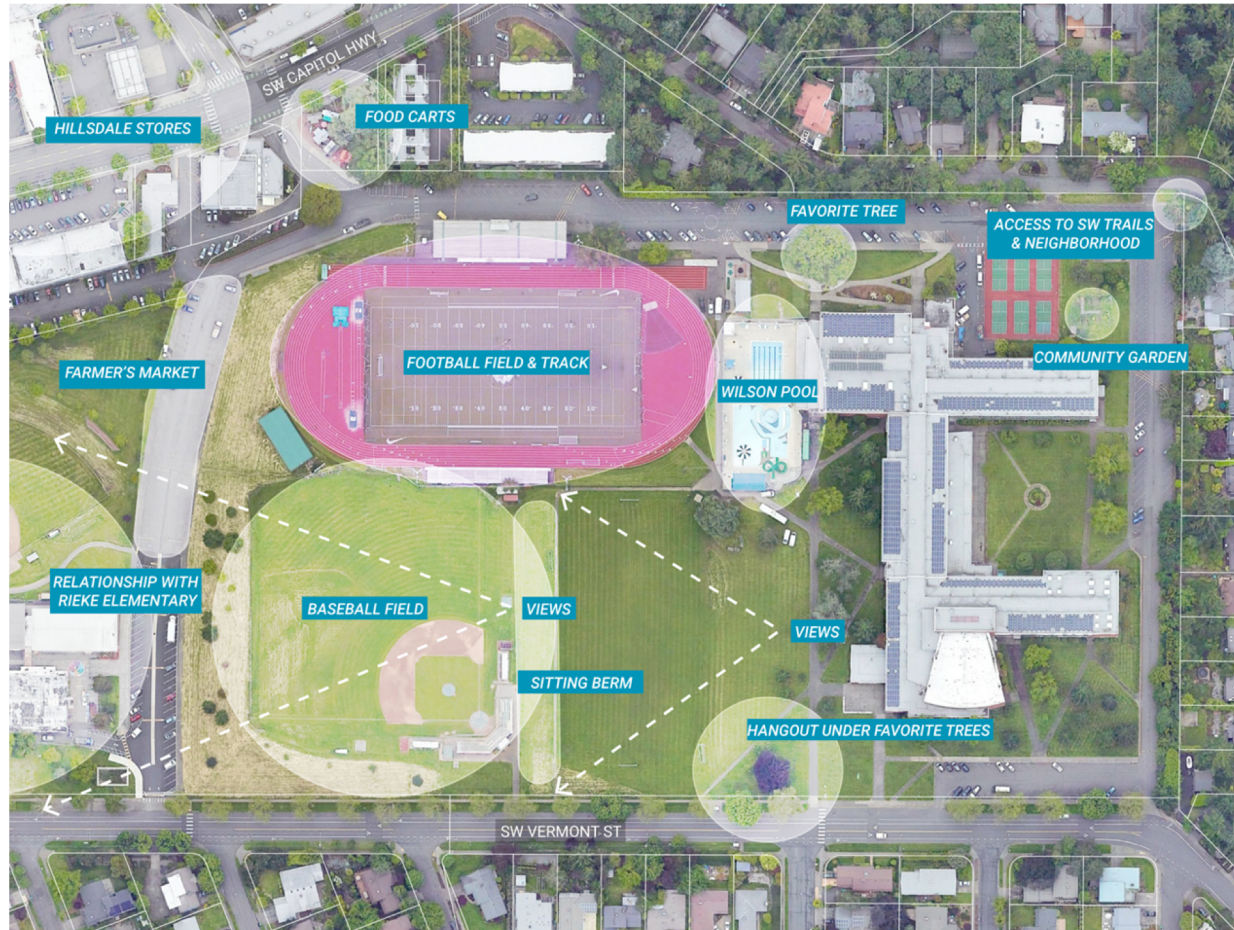
CAMPUS: CIRCULATION & SITE ACCESS



What works
and doesn't
around this
site?

- VEHICLE CIRCULATION
- TRIMET BUS CIRCULATION
- SCHOOL BUS DROPOFF
- BIKE ROUTES
- SW TRAILS ROUTES
- MAIN BUILDING ENTRANCES
- MAIN SITE ACCESS POINTS

CAMPUS: FAVORITE PLACES



What are your
favorite spots
on campus?
and why?

What is
welcoming
and what is not?

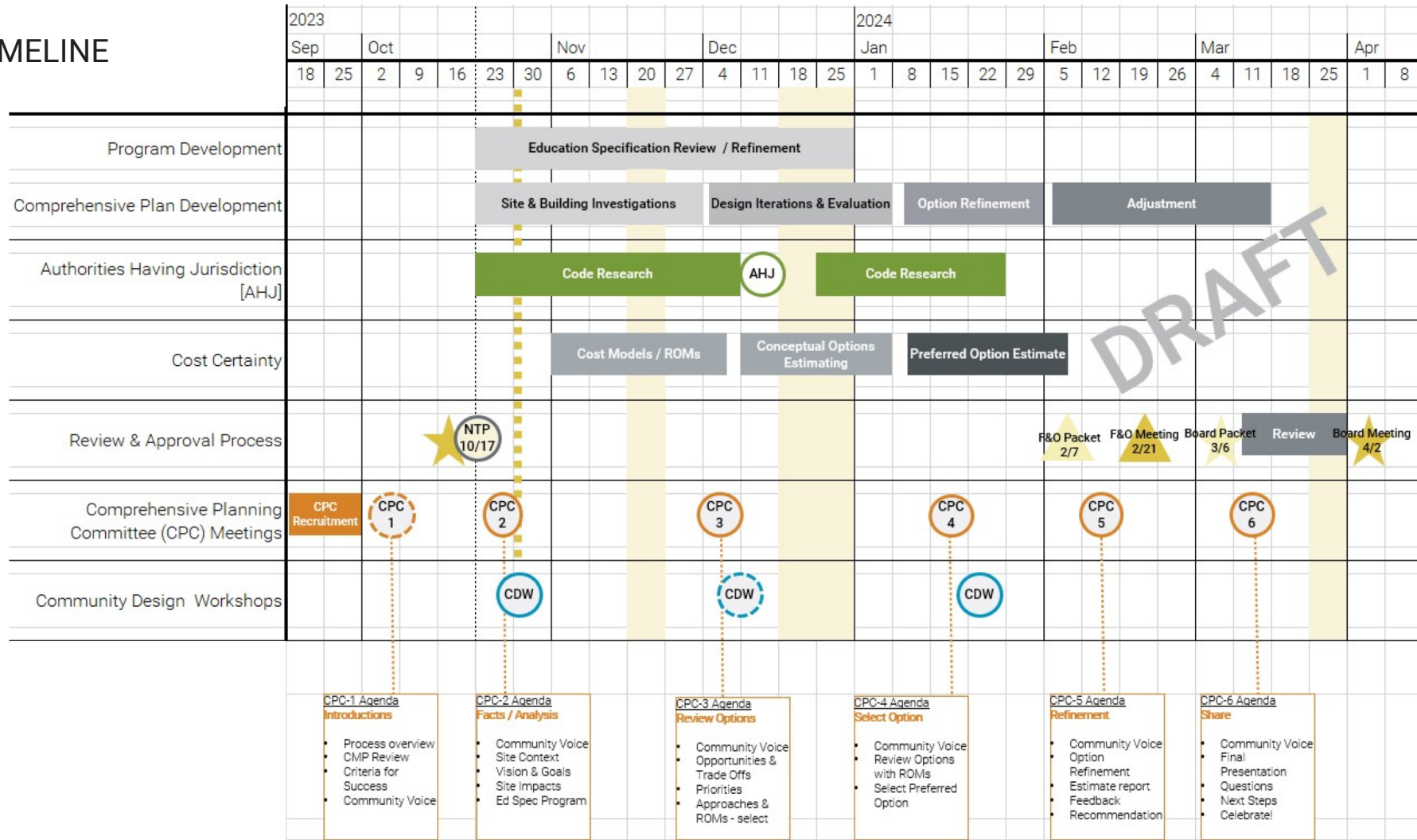
Next Steps



PLANNING PROCESS

1. Understand **constraints and opportunities**
2. Understand the **values and goals** that make this project special
3. Determine how the building should **fit on the site** and where
4. Create a massing **concept design** that fits all the pieces
5. Establish a **reasonable budget** for the project moving forward

TIMELINE



NEXT STEPS

Next Community Workshop: 12/10 (to be verified)

Design Team activities:

- initial **design options** to consider **opportunities and risks**
- first draft of **Guiding Principles** from input on vision and goals
- first draft of a **rough cost model***

** this is based on "comparable" projects, size of building and program, and the major site moves*

Questions?
THANK YOU

